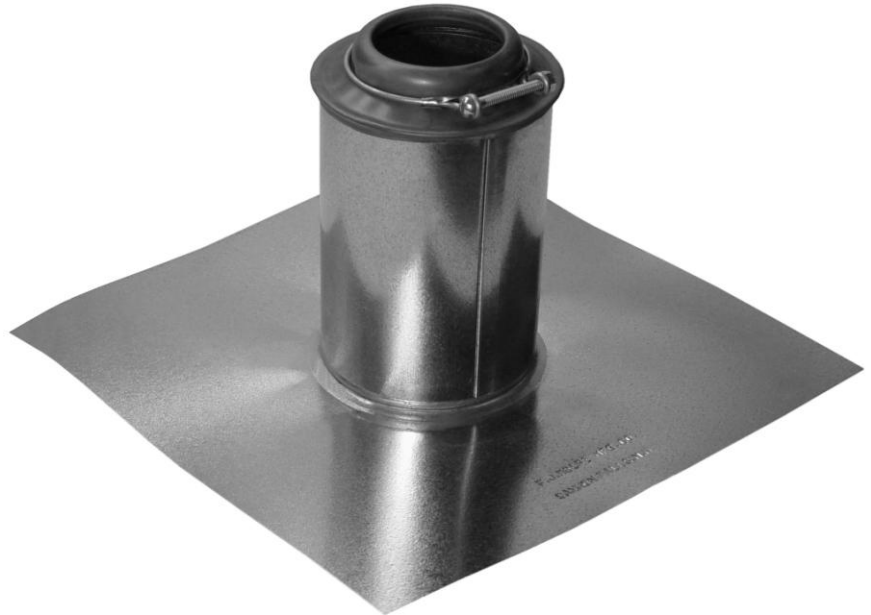


PRODUCT DATA SHEET

No.1 Flat Model - Galvanized

DESCRIPTION

- ◆ Frost resistant design prevents vent closure.
- ◆ Designed for BUR & Modified Bitumen roofs, readily accepts single ply system primers.
- ◆ Patented two piece telescopic cover-all design provides complete enclosure of DWV pipe and roof penetration point.
- ◆ Permanent three point seal unaffected by daily roof movement and structure settling.
- ◆ No.1 style ring clamp top mechanically seals DWV pipe orifice I.D. and O.D.
- ◆ No fasteners, torching or special tooling required.
- ◆ Suitable for new construction, tear-off and retrofit.
- ◆ Impervious to all extreme weather, storm conditions, hail, ponding water and ice.
- ◆ All Flat base seams are hand soldered.



PHYSICAL PROPERTIES

- ◆ 28 Gauge steel, prime material, Lock Forming Quality (LFQ)
- ◆ G-90 Galvanized exterior coating.
- ◆ Lead cap stamped 2-1/2 lb. chemical sheet, 99.6% pure.
- ◆ Ring clamp top (No.1 style).

Product Code	DWV Pipe	Pitch Range	Base Length	Base Width	Top Height	Sleeve Travel	Pack	Carton Weight
2" No. 1 FM	2"	na	12"	12"	8"	1 - 3"	12	26
3" No. 1 FM	3"	na	13.8"	13.8"	8"	1 - 3"	12	31
4" No. 1 FM	4"	na	13.8"	13.8"	8"	1 - 3"	12	31
5" No. 1 FM	5"	na	15"	15"	8"	1 - 3"	6	32
6" No. 1 FM	6"	na	16"	16"	8"	1 - 3"	6	35

INSTALLATION

1. Cut vent pipe approximately 2" above top of base sleeve to allow for roof movement (expansion and contraction).
2. Set flange base in compatible roof cement or sealant.
3. Place flange over roof vent pipe.
4. Center base sleeve around DWV pipe so there is an equal amount of air space around perimeter.
5. Install top sleeve. Press inside lip of lead cap orifice against DWV pipe interior wall.
6. Coat top of flange base with roofing membrane.

HANDLING NOTES

- ◆ Avoid sources of physical damage during handling and transporting.
- ◆ Material Safety Data Sheet available upon request.